

# Mid-Coast Corridor Transit Project Construction Bench Open House November 9, 2016



# MID-COAST TRANSIT CONSTRUCTORS

Clayton Gilliland,  
*MCTC, Project Manager*





# WELCOME!

## Mid-Coast Transit Constructors Construction Bench Open House



# SAN DIEGO ASSOCIATION OF GOVERNMENT

Ron Roberts

***SANDAG, Board of Directors Chair,  
County Board of Supervisors Chair***





# Keynote Speaker

## Mid-Coast Corridor Transit Project



# SAN DIEGO ASSOCIATION OF GOVERNMENT

John Haggerty

***SANDAG, Division Director of Rail &  
Mid-Coast Corridor Director***





# Mid-Coast Project Overview



# Mid-Coast Project



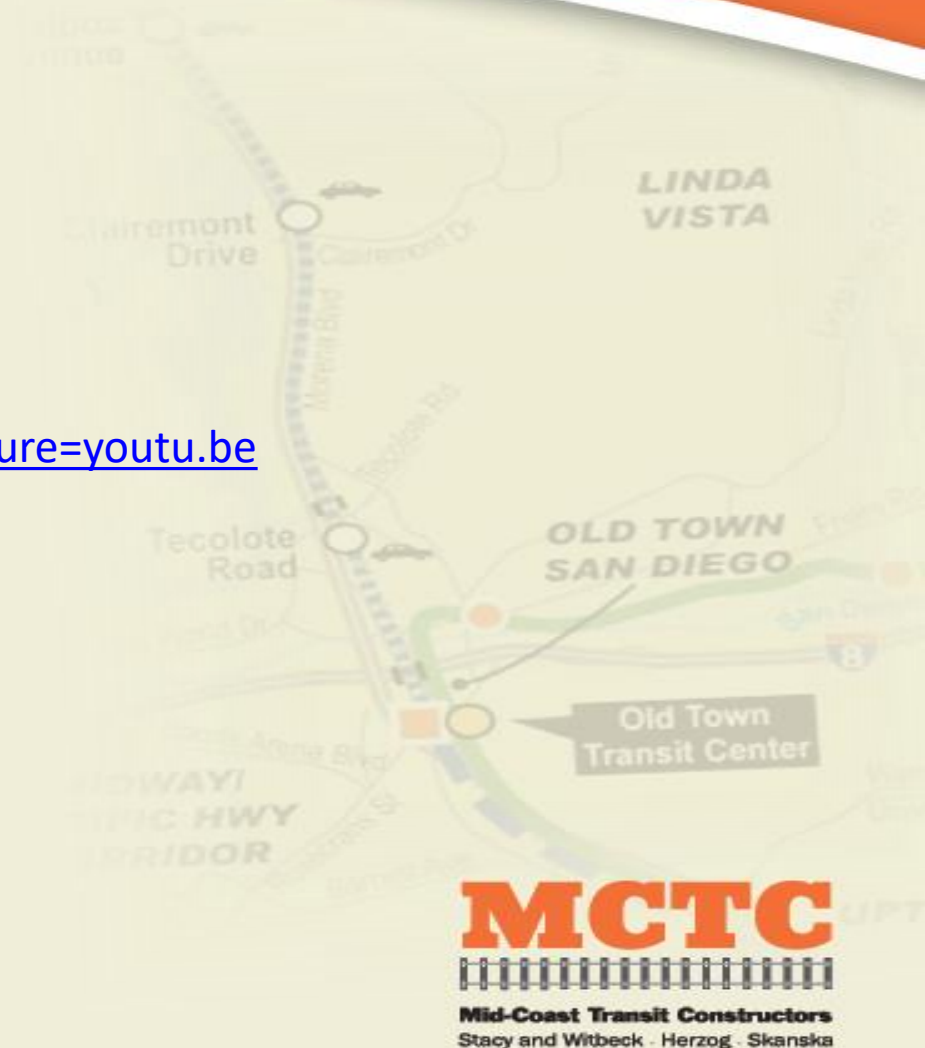
- Extension of Trolley Blue Line from Downtown to UTC Transit Center
- 10.9 miles of new LRT tracks
- 4 plus miles of elevated guideway & bridges
- 4 at-grade and 5 aerial stations
- Traction power, signals & communications
- Special trackwork & shoofly track
- Utility relocation



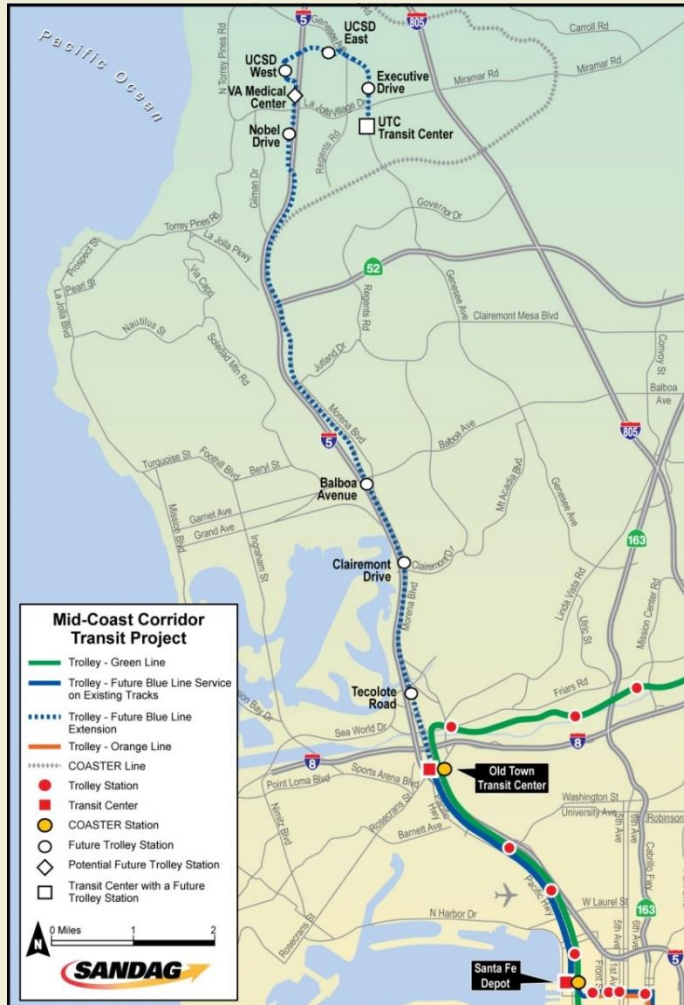


# Mid-Coast Fly-Over Video

<https://www.youtube.com/watch?v=Mg4s8oOMQ6A&feature=youtu.be>



# CM/GC Contract

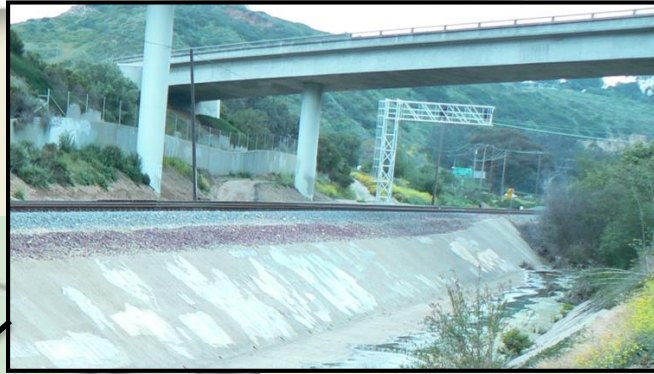


- ☐ Mid-Coast Light Rail Transit Project
- ☐ Wet Utility Relocation
- ☐ Elvira to Morena Double Track Project
- ☐ San Diego River Bridge Project
- ☐ Rose Creek Bike Path
- ☐ Voigt Drive Bridge and Street Improvements
- ☐ Gilman Drive Bridge





# Elvira to Morena Double Track Project



- Rebuild four single track bridges with new double track bridges
- 2.6 miles of track work
- On operating LOSSAN tracks
- Adjacent to Mid-Coast Project



# San Diego River Bridge Project



- Rebuild single track bridge with new double track bridge
- Adjacent to Mid-Coast Project





# Rose Creek Bikeway

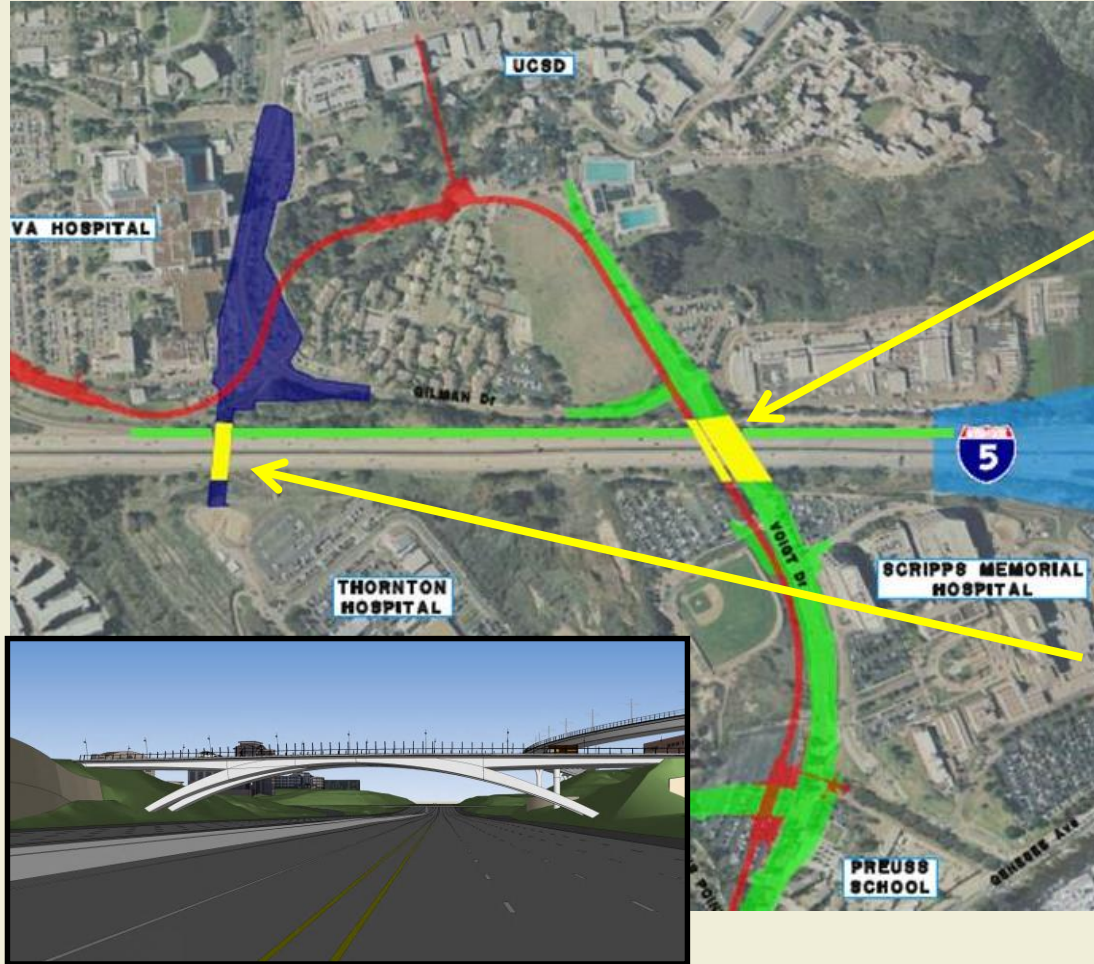


- Bikeway on Santa Fe Street
- Bike Bridge over Rose Creek



Mid-Coast Transit Constructors  
Stacy and Witbeck · Herzog · Skanska

# Voigt & Gilman Drive Bridges



- Voigt Bridge and Roadway Improvements
- Gilman Bridge – Distinctive Arch





# Mid-Coast Timeline

## Environmental & FTA Process

- FTA Record of Decision November 2014
- Entry to Engineering April 2015
- FFGA September 14, 2016

## Construction

- CM/GC Pre-Construction Sep. 2014 – Aug. 2016
- GMP Contract September 2016
- Utilities Relocations Fall 2015 – Fall 2018
- Light Rail Fall 2016 – Fall 2021



# SAN DIEGO ASSOCIATION OF GOVERNMENT

Elaine Richardson

***SANDAG, Manager of Small  
Business Development***



Diversity In Small Contractor Opportunities



Mid-Coast Transit Constructors  
Stacy and Witbeck · Herzog · Skanska



# Small Business Program



# SANDAG D.I.S.C.O. Program

- SANDAG has a “Diversity in Small Contractor Opportunities” Program
- Designed to outreach to small businesses and DBE firms to work with SANDAG
- Small business participation and resulting contract awards have become a growing priority for the agency
- SANDAG wants to optimize participation of highly qualified small businesses in our procurement process.





# SANDAG D.I.S.C.O. Program

## SANDAG Commitment to Small and Disadvantaged Businesses:

- The participation & utilization of small and disadvantaged businesses is important to SANDAG, SANDAG's Executive Director Gary Gallegos, and SANDAG's Board of Directors
- SANDAG encourages prime contractors to make a serious and dedicated commitment to reach out to and include small and disadvantaged businesses on your team
- For more information about the SANDAG DISCO Program, visit [www.sandag.org/contracts](http://www.sandag.org/contracts) and click on "Disco/DBE"



# DBE Program – Small Business Component

- SANDAG is required to include a small business component in its DBE Program
- Fostering small business participation is an important part of the Mid-Coast Subcontracting Plan
- Expectation that 15% to 20% of work will be available for small business participation

**Expect 15% to 20% Small Business Participation**

Small Business must be certified under the CA Dept. of General Services (DGS)





# Benefits of Getting Certified as DBE and SB

- Over \$150 million dollars of contracting opportunities on Mid-Coast
- MCTC must meet an 11.3% DBE goal
- MCTC Small Business Objective in Subcontracting Plan is 15%-20%
- Numerous opportunities over the 5 year contract term



# California Small Business Certification

*Department of General Services*





# Eligibility – CA DGS: SB Certification

- Independently owned and operated
- Principal office in California
- Owners must be domiciled in California
- Must have 100 or fewer employees, and
- Have average annual gross receipts of \$14 million or less over previous 3 tax years



# Steps to become certified as CA Small Business

- Find more information on eligibility and benefits at [www.dgs.ca.gov/OSDS](http://www.dgs.ca.gov/OSDS) under the *SB/DVBE Certification Program*.
- Gather all of your required business information. Go to [www.dgs.ca.gov/pd/getcertified](http://www.dgs.ca.gov/pd/getcertified) to view the *Certification Requirements*.
- Go to [www.eprocure.dgs.ca.gov](http://www.eprocure.dgs.ca.gov), then *Access eProcurement (eP)*. Under *Registration Instructions*, see Step 12 to submit your application.



# SAN DIEGO ASSOCIATION OF GOVERNMENT

Ed Salcedo

*GCAP Services, Principal*





# DBE Program, Mid-Coast, & DBE Certification



# Summary of DBE Program

- SANDAG as direct recipient of FTA funds:
  - Implemented a DBE Program
  - Requires contract goals when appropriate
  - Developed an Overall Project Goal for Mid-Coast Project
- Mid-Coast projects are funded with FTA dollars.



# SANDAG DBE Program

- The FTA Disadvantaged Business Enterprise (DBE) Groups:

Firm must be certified under California Unified Certification Program (CUCP)

**FTA DBE Program**

African American

Hispanic American

Subcontinent Asian American

Pacific Asian American

Native American

Women





# Mid-Coast DBE Goal Strategy

Overall Project Goal (11.3%)

Preconstruction  
DBE Goal

Construction  
DBE Goals



# Mid-Coast Project DBE Elements

- Overall DBE Project goal is 11.3%
- DBE contract goals will be developed for each major bid packet (RFPs) of the project
- MCTC required to exercise good faith efforts to solicit DBE firms throughout performance



# DBE/SB Subcontracting Plan Elements:

- Describes approach and commitment to meet the contract goal(s)
- Provides for reporting commitments and subcontracting opportunities
- Allows for monitoring and enforcement





# MCTC DBE/SB Subcontracting Plan Elements



Introduction



DBE & SB Commitments



DBE Participation



DBE Supportive Services



DBE Program Records



DBE & SB Communication



DBE & SB Database-Directories



Monthly Strategy Meetings



DBE & SB Program Reporting



Auditing



# Why a Subcontracting Plan?

- Some subcontracting opportunities unknown at the time of award
- Allows monitoring throughout performance
- Allows for adjustments and quick action
- Helps everyone meet or exceed DBE goals



# DBE Program Summary

- DBE contract goals for several contracts
- Small Business objective 15% to 20%
- Opportunities available over several years
- Extensive outreach and trade specific workshops
- Subcontracting plan allows flexibility and accountability





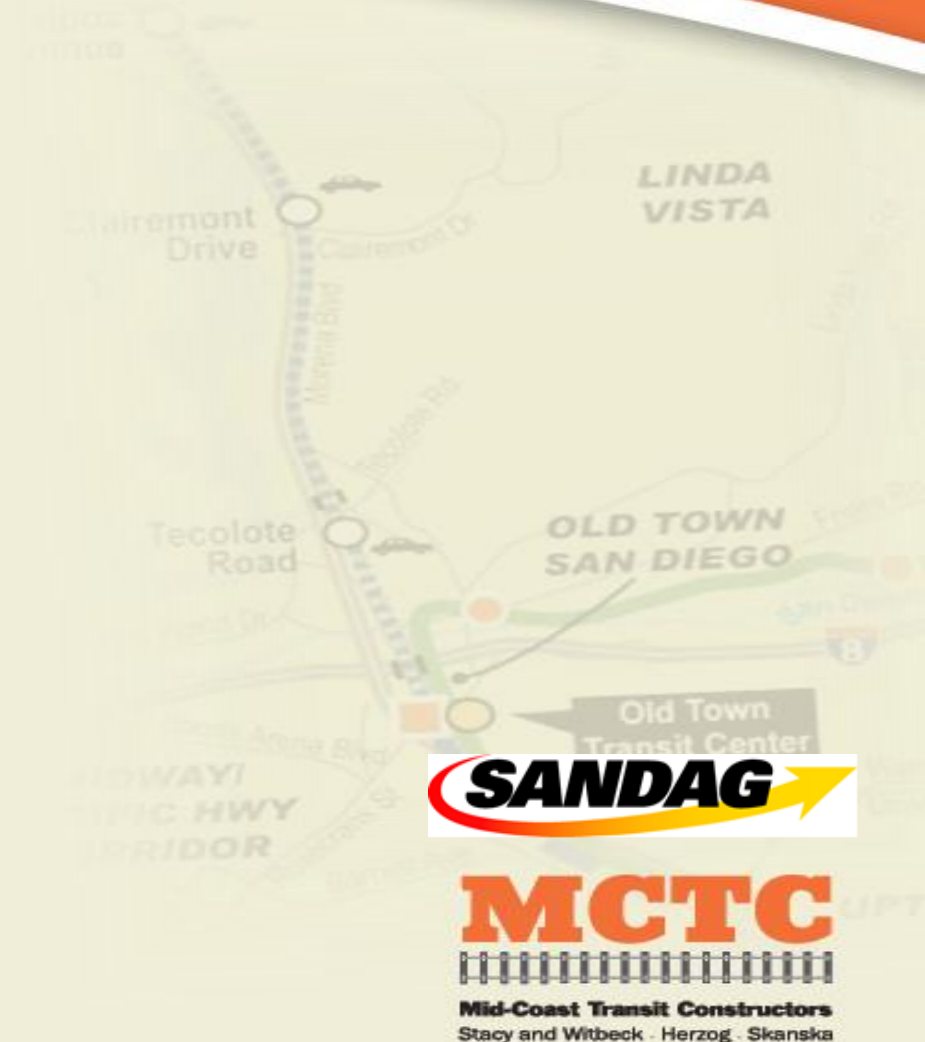
# DBE Certification

*California Unified Certification Program*



# DBE Certification Topics

- Objectives
- Eligibility
- Benefits



# Objectives of DBE Program

## Purpose of the Program:

- Ensure nondiscrimination on US DOT-assisted contracts
- To create a level playing field on which DBEs can compete fairly
- To assist the development of firms so that they can compete successfully





# DBE Eligibility

To be certified as a DBE, a business must be:

- Ownership - 51% or > socially and economically disadvantaged individuals
- Owner must control its management and daily operations
- For-profit business & average gross receipts < than \$23.98 million for previous 3 years
- Personal net worth of owner must not exceed \$1,320,000



# DBE Program Benefits

## Benefits of the program:

- Greater chance of being awarded a subcontract
- Listing in the DBE database serves as a marketing tool
- Bid as a DBE on all DOT contracts
- Participate in free business development opportunities



# Get Help Becoming a DBE

## Resources:

- Caltrans – District 11
- Small Business Development Centers
- San Diego Contracting Opportunity Center
- MCTC – Supportive Services





# MID-COAST TRANSIT CONSTRUCTORS

Clayton Gilliland,  
*MCTC, Project Manager*



# Who is MCTC

*Mid-Coast Transit Constructors*



# Who is MCTC?

## The Team: *Mid-Coast Transit Constructors*

- Fully integrated Joint Venture of Stacy and Witbeck, Herzog, and Skanska.
- MCTC team members are heavy civil constructors specializing in CM/GC contracting for rail projects
- Experts at self-performing rail and bridge work proudly managed and built by our own forces
- In the past 10yrs our firms have constructed over 600 miles of track for passenger service
- Combined CM/GC experience includes more than 30 rail transit projects with a total value of over \$4.7 Billion





# What is CM/GC?

## CM/GC Delivery Method

- 2 Phase Approach, Designers Employed by SANDAG
  - Pre-Construction
    - Value Engineering
    - Constructability
    - Work Planning, Phasing and Sequencing
    - Scheduling
    - Cost Estimating
  - Construction
    - Self-Perform
    - Sub-Contract



# MID-COAST TRANSIT CONSTRUCTORS

Eric Meisgeier,  
*MCTC, Project Engineer*



# Project Requirements

- Buy America (All Permanent Materials)
- Union
  - Signatory to Laborers, Operators, Carpenters, Masons
  - DBEs able to sign One-Time Project Agreement
- California Contractors License
- Department of Industrial Relations (DIR) number
- Quality Safety Record
- Certified Payroll
- Prevailing Wages for on-site work

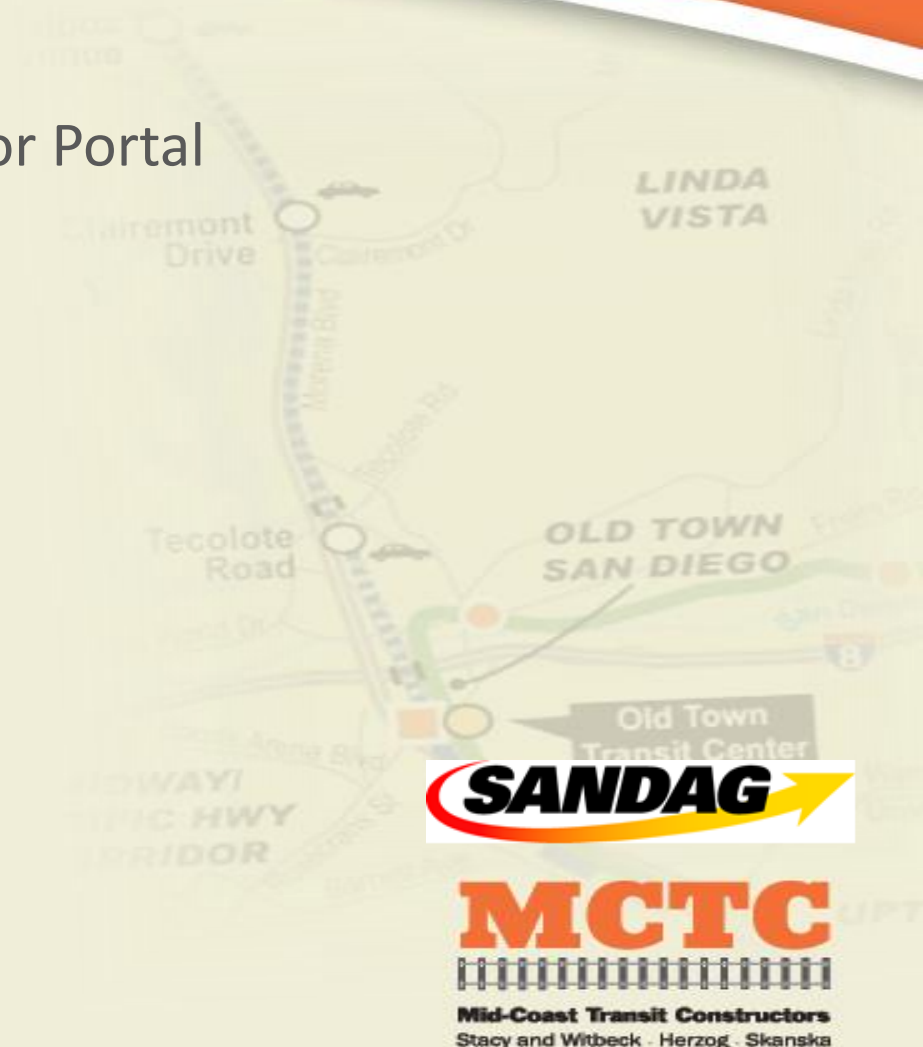
*(\*certain requirements may not be applicable to your scope)*





# Bidding the Work

- Document Distribution via MCTC PlanetBids Vendor Portal
- Submit Your Bid via PlanetBids Vendor Portal
  - Standard Bid Documents
  - Scope Specific Documents
  - Buy America
- Best Value Selection Process & Scoring Criteria
  - Price
  - Approach
  - Experience
  - DBE Participation
  - Overall DBE Goal: 11.3%



# Traditional Procurement

These procurement opportunities have/will be solicited through our PlanetBids Vendor Portal

## Completed

- San Diego River Bridge Double Track
- Gilman Bridge
- Mid-Coast (partial)
- Elvira to Morena Double Track

## Future Procurements

- Voigt Drive
- Rose Creek Bikeway
- Mid-Coast Stations
- Genesee Viaduct



# MCTC Construction Bench





# MID-COAST TRANSIT CONSTRUCTORS

Jon Collins,

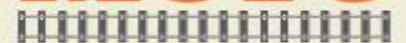
*MCTC, Project Controls Manager*

Cory Raymond,

*MCTC, DBE/SB Compliance & Outreach*



**MCTC**



Mid-Coast Transit Constructors  
Stacy and Witbeck · Herzog · Skanska

# Construction Bench Program

- Program will assist certified Disadvantaged Business Enterprise (DBE) and Small Business (SB) firms gain access to subcontract opportunities on the Mid-Coast Corridor Transit Project.
- Program will pre-qualify DBE and SB firms that provide a variety of services
- MCTC will seek to include contract ready DBE and SB firms from the pool of firms registered with the Construction Bench
- MCTC will be able to expeditiously seek bids and put firms to work to meet ongoing project needs



# Construction Bench Scopes

Including but not limited to the following:

- Tree Removal
- Fencing
- Landscaping
- Electrical
- Masonry
- Painting
- Traffic Control
- Trucking
- Concrete Flatwork
- Anti-Graffiti Coating
- Clearing and Grubbing
- And other misc.





# Construction Bench Questionnaire



Mid-Coast Transit Constructors  
Stacy and Witbeck, Herzog, Skanska  
4660 Executive Drive, Suite 100  
San Diego, CA 92121

## Mid-Coast Corridor Transit Project

### Mid-Coast Transit Constructors - Construction Bench Questionnaire

1. Circle your scope(s) of work:

Clearing/Grubbing   Tree Removal   Fencing   Landscaping   Masonry  
Electrical   Concrete Flatwork   Painting   Anti-Graffiti Coatings  
Traffic Control   Trucking   Other: \_\_\_\_\_

2. Company Name: \_\_\_\_\_

3. Point of Contact: \_\_\_\_\_

Phone #: \_\_\_\_\_ Email Address: \_\_\_\_\_

4. Are you a DBE sub, DBE supplier, DBE broker, SB sub, SB supplier, or SB broker? (list all) \_\_\_\_\_

5. DBE certification number? \_\_\_\_\_

6. SB certification number? \_\_\_\_\_

7. Please list your Company's NAICS codes: \_\_\_\_\_

8. Have you worked on a project that was Buy America compliant? Yes or No

9. Have you worked on a project that required certified payroll and prevailing wages? Yes or No

10. Do you have previous experience working on a project within the LOSSAN Rail Corridor? Yes or No.

If Yes, please list project name, duration, dollar value:

\_\_\_\_\_  
\_\_\_\_\_  
\_\_\_\_\_

11. Please circle if you are **union** or **non-union**?

If non-union, are you willing to sign a one-time project agreement with the union? Yes or No



Mid-Coast Transit Constructors  
Stacy and Witbeck, Herzog, Skanska  
4660 Executive Drive, Suite 100  
San Diego, CA 92121

12. Are you able to work nights? Yes or No

13. Are you able to work weekends? Yes or No

14. Is your company:  
a. Licensed? Yes or No  
b. Insured? Yes or No.  
c. Bonded? Yes or No

Please provide Bond rates: \_\_\_\_\_. (\*Must be licensed and insured to bid in the future.)

15. What is your current OSHA Recordable Injury Rate? \_\_\_\_\_

Experience Modification Rating? \_\_\_\_\_

16. Have you ever worked on a Public Works Project? Yes or No

17. What is your Company's Department of Industrial Relations (DIR) Registration Number? (Professional Services exempt) \_\_\_\_\_

18. What is your Contractor's License Number for the State of California? (mark N/A if none) \_\_\_\_\_

19. What is your Contractor's License Number for the City of San Diego? (mark N/A if none) \_\_\_\_\_

Questionnaire also available online  
**WWW.MCTCJV.COM**



# Construction Bench Procurement

## Upcoming Needs:

- **Tree Removal:** 4<sup>th</sup> Quarter 2016- 2<sup>nd</sup> Quarter 2017
- **Clearing and Grubbing:** 4<sup>th</sup> Quarter 2016- 2<sup>nd</sup> Quarter 2017
- **Traffic Control:** 4<sup>th</sup> Quarter 2016- Project Duration
- **Trucking:** 4<sup>th</sup> Quarter 2016- Project Duration
- **Fencing (*Temporary*):** 4<sup>th</sup> Quarter 2016- 2<sup>nd</sup> Quarter 2017



# Construction Bench Review Process

## Questionnaire Submission:

- Questionnaires submitted to MCTC (Web-Based or PDF Form)
- Initial email sent to firm confirming questionnaire received for review
- Basic check for missing information performed; Follow-up if any additional info is needed

## Initial Certification Verification/CUF Check:

- Check DBE (with CUCP) and SB (with DGS) databases for certifications
- Check NAICS codes against Census database; Make sure codes match scope(s) of work claiming

## Procurement Manager does final verification

- MCTC will reach out for any additional information needed to finalize enrollment
- Once completed, final email will be sent confirming Construction Bench approval





# I'm Registered, What's Next?

## Procuring from Construction Bench:

- As subcontractor needs arise, Engineers and Superintendents refer to the list of DBE/SB subcontractors on the Bench
- Bench subcontractors will be contacted to see if they'd be interested in quoting the needed work
- If interested, Engineers will directly coordinate with the Bench subcontractors on scope, plans, schedule, etc.
- Bench subcontractors submit a quote to MCTC
- MCTC reviews quotes received and selects the best value subcontractor



# DBE Workshop Series

## MCTC CUF Training

November 29<sup>th</sup>

*Details to follow*



# CONTACT US

AMBER LINGER

[ALINGER@MCTCJV.COM](mailto:ALINGER@MCTCJV.COM)

801-682-2498

ALICE HEMINOVER

[AHEMINOVER@MCTCJV.COM](mailto:AHEMINOVER@MCTCJV.COM)

303-512-3817

JON COLLINS

[JCOLLINS@MCTCJV.COM](mailto:JCOLLINS@MCTCJV.COM)

720-244-9598

CORY RAYMOND

[CRAYMOND@MCTCJV.COM](mailto:CRAYMOND@MCTCJV.COM)

619-618-8606

[\*\*WWW.MCTCJV.COM\*\*](http://WWW.MCTCJV.COM)





# Thank You

THANK YOU TO THE PUBLIC AGENCY  
CONSORTIUM (P.A.C.) MEMBERS AND  
SUBCONTRACTORS THAT CAME OUT TO  
SUPPORT THIS EVENT AND OUR EFFORTS  
TO PUT DBE/SB FIRMS TO WORK!



# Mid-Coast Fly-Over Video

